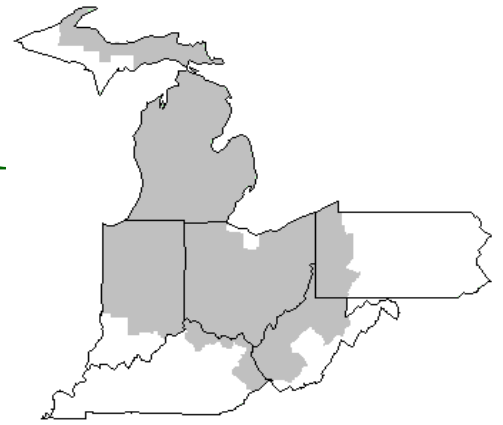


# Mideast Market Administrator's Bulletin



## Federal Order No. 33

Scott C. Jones, Market Administrator

Phone: (330) 225-4758 Toll Free: (888) 751-3220

Email: [mideastorder@fmmaclev.com](mailto:mideastorder@fmmaclev.com)

WebPage: [www.fmmaclev.com](http://www.fmmaclev.com)

**APRIL 2024**

## Dairy Forecasts for 2024

The 2024 dairy herd size forecast is 9,355 thousand head, unchanged from the previous month. Anticipated lower yield per cow throughout the year has led to a reduction of 100 pounds per head, now forecast at 24,245 pounds. Consequently, the revised milk production forecast for 2024 is 226.3 billion pounds, a decrease of 1.0 billion from the previous month's estimate.

Dairy imports were adjusted upward from last month's forecast. On a milk-fat basis, dairy import projections in 2024 were raised to 8.0 billion pounds (+0.3 billion), while on a skim solids basis imports were raised to 6.8 billion pounds (+0.1 billion). Higher import volumes of products such as cheese, butter, infant formula, yogurt, dry whey products, and canned milk are anticipated for 2024.

The 2024 dairy export forecast on a milk-fat basis has been raised 0.2 billion pounds to 11.3 billion based on expected strong international demand. The export forecast on a skim-solids basis is lowered to 49.7 billion pounds (-0.3 billion). In 2024, export shipments of skim milk powder, cheese, and butter are expected to increase, while those of dry whey products and lactose are anticipated to decrease.

The 2024 forecast for domestic disappearance has been lowered from last month's projection. On a milk-fat basis, domestic use decreased by 1.7 billion pounds, bringing the total to 223.0 billion pounds. On a skim-solids basis, the domestic use forecast declined by 0.5 billion pounds, totaling 182.9 billion pounds.

Based on recent mixed price trends, the adjusted forecasts, in dollars per pound for dairy products, are as follows: Cheddar cheese \$1.620 (-9.0 cents), dry whey \$0.425 (-2.50 cents), butter \$2.925 (+12.5 cents), and NDM \$1.180 (-3.0 cents).

With lower cheese and dry whey prices, the new forecast for Class III milk is \$16.20 per cwt, \$0.95 lower than the previous forecast. With higher butter price projections more than offsetting lower NDM prices, the Class IV price forecast has been raised to \$20.40 per cwt, \$0.30 higher than the previous projection. The all-milk price for 2024 is now forecast at \$20.90 per cwt, down \$0.35 from last month's forecast.

Livestock, Dairy, and Poultry Outlook: April 2024, LDP-M-358, April 17, 2024

## Export and Import Happenings

February dairy exports showed a year-over-year uptick for the first time since the beginning of 2023. Dairy exports on a milk-fat milk-equivalent basis totaled 925 million pounds, 104 million higher than February 2023. On a skim-solids milk-equivalent basis, February exports totaled 4.177 billion pounds, 260 million pounds higher than February 2023. Higher year-over-year shipments of cheese, nonfat dry milk, and whey protein concentrate more than offset lower shipments of butter, lactose, and whey products.

On a milk-fat basis, February U.S. dairy imports totaled 660 million pounds, 112 million higher than February 2023. On a skim-solids basis, February imports totaled 486 million pounds, 118 million lower than January and 79 million lower than last February. The year-over-year decrease in dairy imports on a skim-solids basis was mostly due to lower imports of milk protein products (casein and milk protein concentrates).

Livestock, Dairy, and Poultry Outlook: April 2024, LDP-M-358, April 17, 2024

## March 2024 Pool Summary

### Classification of Producer Milk

	<i>Pounds</i>	<i>Percent</i>
Class I	587,353,441	38.6
Class II	167,943,225	11.0
Class III	704,108,859	46.3
Class IV	61,370,339	4.1
Total	1,520,775,864	100.0

### Producer Prices

Producer Price Differential	\$2.30 /cwt
Butterfat Price	3.2385 /lb
Protein Price	1.1265 /lb
Other Solids Price	0.2881 /lb
Somatic Cell Adjustment Rate	0.00080 /cwt
Statistical Uniform Price	18.64 /cwt

Livestock, Dairy, and Poultry Outlook: April 2024, LDP-M-358, April 17, 2024

**ANNOUNCEMENT OF PRODUCER PRICES**

**Federal Order No. 33**

**MARCH 2024**

**COMPUTATION OF PRODUCER PRICE DIFFERENTIAL**

	<u>POUNDS</u>	<u>BUTTERFAT</u>	<u>SKIM / PROTEIN</u>	<u>NONFAT SOLIDS</u>	<u>OTHER SOLIDS</u>	<u>PRICE</u>	<u>VALUE</u>
Class I Skim Value			574,300,003			\$10.14 / cwt	\$ 58,234,020.30
Class I Butterfat		13,053,438				3.1469 / lb	41,077,864.04
Class I Location Differential	587,353,441						(359,727.41)
Class II SNF Value				14,424,213		1.1233 / lb	16,202,718.45
Class II Butterfat		15,837,081				3.2455 / lb	51,399,246.38
Class III Protein Value			23,177,222			1.1265 / lb	26,109,140.60
Class III Other Solids Value					40,896,549	0.2881 / lb	11,782,295.80
Class III Butterfat		26,046,500				3.2385 / lb	84,351,590.27
Class IV SNF Value				4,945,857		1.0083 / lb	4,976,907.61
Class IV Butterfat		9,225,229				3.2385 / lb	29,875,904.14
Somatic Cell Value II / III / IV							1,378,890.00
<b>TOTAL PRODUCER MILK VALUE</b>	<b>1,520,775,864</b>	<b>64,162,248</b>	<b>49,838,373</b>		<b>87,934,289</b>		<b>\$ 325,028,850.19</b>
Overages					16,535.99		
Beginning Inventory & OS Charges					(20,114.05)		
<b>TOTAL ADJUSTMENTS</b>							<b>\$ (3,578.06)</b>
<b>TOTAL HANDLER OBLIGATIONS</b>							<b>\$ 325,025,272.13</b>
Total Protein Value			49,838,373 lbs	@	\$1.1265		\$ (56,142,927.19)
Total Other Solids Value			87,934,289 lbs	@	0.2881		(25,333,868.65)
Butterfat Value			64,162,248 lbs	@	3.2385		(207,789,440.14)
Total Somatic Cell Values							(2,234,223.80)
<b>TOTALS</b>							<b>\$ 33,524,812.35</b>
Net Producer Location Adjustments							\$ 1,504,411.83
1/2 Unobligated Balance Producer Settlement Fund							639,000.00
Total - Divided by Total Pounds			1,520,785,976 lbs		2.3453809		\$ 35,668,224.18
Rate of Cash Reserve					(0.0453809)		(700,146.75)
<b>PRODUCER PRICE DIFFERENTIAL at Cuyahoga County, OH <sup>1</sup></b>			1,520,785,976		<b>\$ 2.30 /cwt</b>		<b>\$ 34,968,077.43</b>

**COMPONENT PRICES**

**COMPUTATION OF UNIFORM PRICE**

	<u>March</u>			<u>March</u>	
	<u>2024</u>	<u>2023</u>		<u>2024</u>	<u>2023</u>
Butterfat Price	\$3.2385 / lb	\$2.7300 / lb	Class III Price - 3.5% BF	\$16.34	\$18.10
Protein Price	1.1265 / lb	2.4085 / lb	Producer Price Differential*	<u>2.30</u>	<u>0.81</u>
Other Solids Price	0.2881 / lb	0.2338 / lb	Statistical Uniform Price	\$18.64	\$18.91
Somatic Cell Adjustment Rate	0.00080 / cwt	0.00092 / cwt			
Nonfat Solids Price <sup>2</sup>	1.0083 / lb	1.0154 / lb			

**CLASS PRICES**

**CLASSIFICATION OF PRODUCER MILK**

	<u>March</u>			<u>March</u>	
	<u>2024</u>	<u>2023</u>		<u>2024</u>	<u>2023</u>
Class I*	\$20.80	\$20.99	Class I	Product lbs. 587,353,441	Product lbs. 542,020,989
Class II	21.12	19.52	Class II	167,943,225	104,988,502
Class III	16.34	18.10	Class III	704,108,859	734,107,388
Class IV	20.09	18.38	Class IV	<u>61,370,339</u>	<u>250,169,175</u>
			Total	1,520,775,864	1,631,286,054

<sup>1</sup> Subject to Location Adjustment.

<sup>2</sup> Producers are not paid on this component.

**ORDER 33 MARKET SUMMARY**

The Producer Price Differential for the Mideast Marketing Area for March 2024 was \$2.30, and the Statistical Uniform Price was \$18.64 for the month. The Statistical Uniform Price is \$0.68 higher than last month, and is \$0.27 lower than March 2023.

The Producer Butterfat Price of \$3.2385 per pound increased \$0.1354 from February and is up \$0.5085 from a year ago. The Protein Price of \$1.1265 is down \$0.0990 from last month and is down \$1.2820 from March 2023. The Other Solids Price in March was \$0.2881 per pound, an increase from last month's price of \$0.2738 and \$0.0543 higher than last March. The Somatic Cell Adjustment rate for March was \$0.00080

per cwt. March producer receipts of 1.52 billion pounds were 19.6 percent higher than February and 6.8 percent higher than March 2023 production of 1.63 billion pounds. Producer milk allocated to Class I accounted for 38.6 percent of the total producer milk in March 2024, lower than 40.6 percent in February, and higher than 33.2 percent in March 2023. A total of 3,292 producers were pooled on the Mideast Order compared to 3,330 producers pooled in March 2023.

The market average content of producer milk was as follows: Butterfat 4.22 %; Protein 3.28 %; Other Solids 5.78 % and Nonfat Solids 9.06 %.

### February 2024 Highlights

**Total cheese** output (excluding cottage cheese) was 1.13 billion pounds, 3.0 percent above February 2023 but 5.6 percent below January 2024.

**Italian type cheese** production totaled 479 million pounds, 4.4 percent above February 2023 and 6.2 percent below January 2024.

**American type cheese** production totaled 438 million pounds, 1.2 percent below February 2022 and 7.5 percent below January 2024.

**Butter** production was 198 million pounds, 5.6 percent above February 2023 and 9.0 percent below January 2024.

**Dry milk products** (comparisons in percentage with February 2023)  
 Nonfat dry milk, human - 147 million pounds, down 19.3 percent.  
 Skim milk powder - 36.2 million pounds, down 2.6 percent.

**Whey products** (comparisons in percentage with February 2023)  
 Dry whey, total - 72.1 million pounds, up 7.9 percent.  
 Lactose, human and animal - 87.5 million pounds, up 5.8 percent.  
 Whey protein concentrate, total - 38.7 million pounds, up 4.2 percent.

**Frozen products** (comparisons in percentage with February 2023)  
 Ice cream, regular (hard) - 53.6 million gallons, down 8.3 percent.  
 Ice cream, lowfat (total) - 30.1 million gallons, down 5.7 percent.  
 Sherbet (hard) - 1.55 million gallons, down 32.7 percent.  
 Frozen yogurt (total) - 4.13 million gallons, down 4.8 percent.

*Released April 5, 2024, by the National Agricultural Statistics Service (NASS), Agricultural Statistics Board, United States Department of Agriculture (USDA).*

### February Cheese and Butter Stocks

Total natural cheese stocks in refrigerated warehouses on February 29, 2024, were up slightly from the previous month and up 2 percent from February 29, 2023. Butter stocks were up 19 percent from last month and up 1 percent from a year ago.

*Released March 25, 2024, by the National Agricultural Statistics Service (NASS), Agricultural Statistics Board, United States Department of Agriculture (USDA).*

### February Milk Production Up 2.4 Percent

Milk production in the 24 major States during February totaled 17.4 billion pounds, up 2.4 Percent from February 2023. However, adjusting production for the additional day due to leap year causes February milk production to be down 1.1 percent on a daily basis. January revised production, at 18.3 billion pounds, was down 1.0 percent from January 2023. The January revision represented a decrease of 6 million pounds or less 0.1 percent from last month's preliminary production estimate.

Production per cow in the 24 major States averaged 1,955 pounds for February, 58 pounds above February 2023.

The number of milk cows on farms in the 24 major States was 8.88 million head, 61,000 head less than February 2023, but 8,000 head more than January 2024.

The Mideast Marketing Area has four states represented in the 23 major states used above. They are Indiana, Michigan, Ohio, and Pennsylvania. Milk production in these Mideast states during February totaled 2.6 billion pounds, up 67 million pounds or 2.7 percent from February 2023.

Production per cow in the Mideast states averaged 1,888 pounds for February, 42 pounds more than February 2023.

The number of cows on farms in the Mideast states was 1.3 million head, 6,000 head more than February 2023.

Released March 20, 2024, by the National Agricultural Statistics Service (NASS), Agricultural Statistics Board, United States Department of Agriculture (USDA).

#### Bulletin WebPage Edition

[www.fmmaclev.com](http://www.fmmaclev.com)

#### Featured this month are:

- Producer Milk Classification
- Statistical Uniform Price
- Class and Component Prices
- National Product Prices

### Weighted Averages - Butterfat, Protein, Other Solids, Somatic Cell Count by State

Federal Order No. 33

State	February 2024 -----Weighted Averages-----						February 2023 -----Weighted Averages-----				
	Number of Producers	Pounds of Milk (000)	Butterfat	Protein	Other Solids	SCC (000)	Pounds of Milk (000)	Butterfat	Protein	Other Solids	SCC (000)
Michigan	706	587,616	4.23	3.28	5.79	154	704,376	4.13	3.28	5.80	152
Ohio	1,099	339,642	4.17	3.25	5.73	173	347,940	4.12	3.27	5.76	174
Indiana	581	178,810	4.29	3.32	5.93	181	232,100	4.09	3.26	5.79	185
Pennsylvania	632	73,657	4.21	3.19	5.68	208	75,663	4.10	3.16	5.68	212
New York	94	25,996	4.59	3.44	6.00	178	37,411	4.23	3.33	5.93	178
Other	185	65,052	4.40	3.33	5.77	156	40,117	4.15	3.24	5.76	179
Total/Average *	3,297	1,270,773	4.24	3.28	5.79	167	1,437,607	4.13	3.27	5.78	167

\* Totals may not add due to rounding. Data provided on a one month delay basis and includes only milk from these states *pooled* on the Mideast order.



**United States  
Department of  
Agriculture**

PRSR STD  
U.S. POSTAGE  
PAID  
Cleveland, Ohio  
Permit No. 2511

**Mideast Market Administrator Bulletin**  
1325 Industrial Parkway North  
P.O. Box 5102  
Brunswick, Ohio 44212

POSTMASTER: Time Sensitive Material - Deliver Promptly

The U.S. Department of Agriculture (USDA) prohibits discrimination in all its programs and activities on the basis of race, color, national origin, age, disability, and where applicable, sex (including gender identity and expression), marital status, familial status, parental status, religion, sexual orientation, political beliefs, genetic information, reprisal, or because all or part of an individual's income is derived from any public assistance program. (Not all prohibited bases apply to all programs.) Persons with disabilities who require alternative means for communication of program information (Braille, large print, audiotape, etc.) should contact USDA's TARGET Center at (202) 720-2600 (voice and TDD).

To file a complaint of discrimination, write USDA, Assistant Secretary for Civil Rights, Office of the Assistant Secretary for Civil Rights, 1400 Independence Avenue, S.W., Stop 9410, Washington, D.C. 20250-9410, or call (866) 632-9992 (English) or (800) 877-8339 (TDD) or (866) 377-8642 (English Federal-relay) or (800) 845-6136 (Spanish Federal-relay). USDA is an equal opportunity provider and employer.

**FEDERAL ORDER DATA  
March 2024**

Marketing Area <sup>1/</sup>	Producer Milk		Class I Percent %	Producer Price Differential (per cwt.)	Statistical Uniform Price (per cwt.)
	Total (000)	Class I (000)			
FO 1 Northeast - (Boston)	2,341,511	658,694	28.1	\$3.84	\$20.18
FO 5 Appalachian - (Charlotte)	468,022	307,644	65.7	<sup>2/</sup>	21.60
FO 6 Florida - (Tampa)	217,483	178,475	82.1	<sup>2/</sup>	23.75
FO 7 Southeast - (Atlanta)	320,214	209,772	65.5	<sup>2/</sup>	22.07
FO 30 Upper Midwest - (Chicago)	2,712,500	155,708	5.7	0.36	16.70
FO 32 Central - (Kansas City)	1,287,211	356,610	27.7	1.68	18.02
<b>FO 33 Mideast - (Cleveland)</b>	<b>1,520,776</b>	<b>587,353</b>	<b>38.6</b>	<b>2.30</b>	<b>18.64</b>
FO 51 California - (Los Angeles)	2,066,640	380,443	18.4	1.43	17.77
FO 124 Pacific Northwest - (Seattle)	620,732	124,305	20.0	2.07	18.41
FO 126 Southwest - (Dallas)	1,113,359	315,904	28.4	2.14	18.48
FO 131 Arizona - (Phoenix)	413,961	112,741	27.2	<sup>2/</sup>	19.63

<sup>1/</sup> Names in parentheses are principal points of markets.

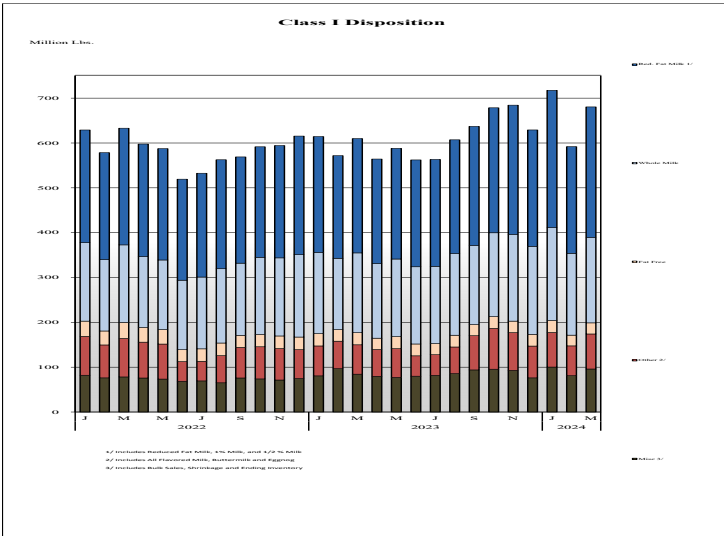
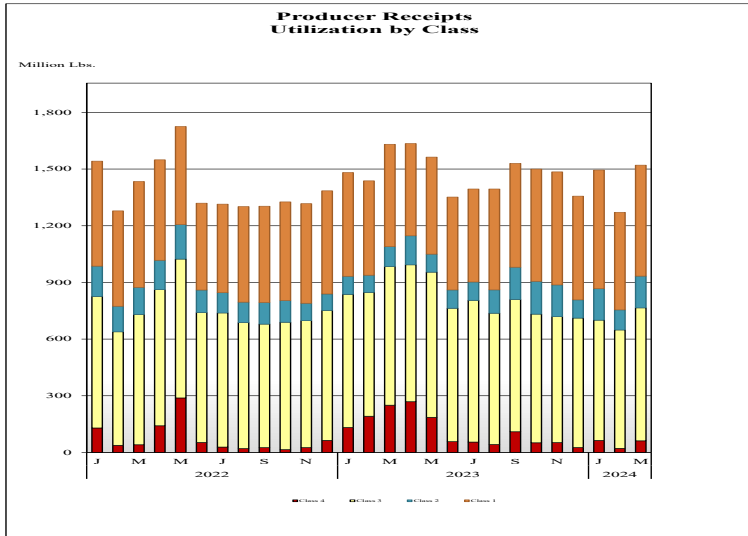
<sup>2/</sup> Producers in these markets are paid on the basis of a uniform skim and butterfat price.

**MINIMUM PARTIAL PAYMENT PRICE FOR APRIL 2024.....\$16.34 /cwt.**

# Mideast Market Administrator's Bulletin

Federal Order No. 33 Supplement  
April 2024

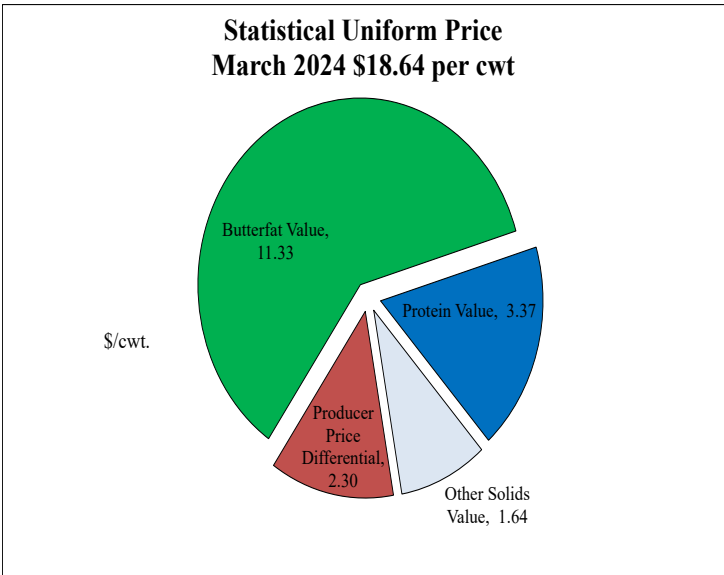
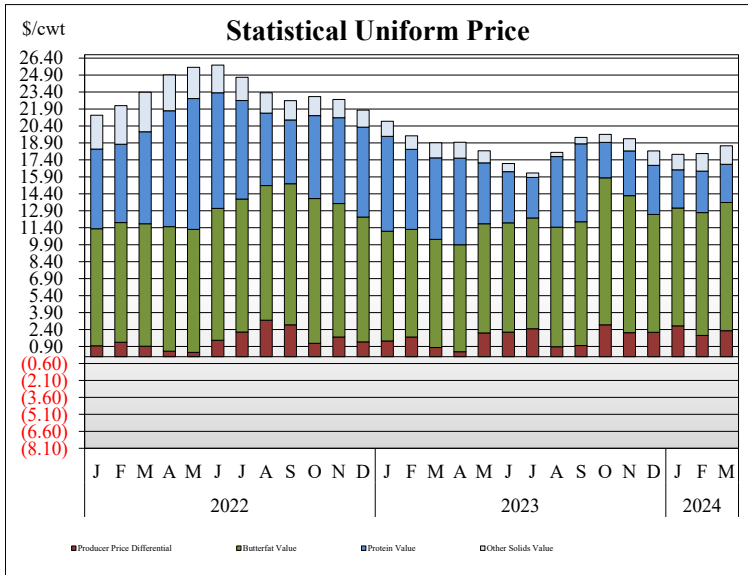
## PRODUCER MILK CLASSIFICATION



**Producer Receipts:** Producer receipts for the Mideast Order totaled 1.52 billion pounds in March 2024. The pounds allocated to Class I represented 38.6 percent of the total pounds. Producer receipts increased 249.6 million pounds compared to February 2024, and were down 110.5 million pounds from the prior year.

**Class I Pounds:** Class I Disposition for the Mideast Order totaled 680.5 million pounds in March 2024, up 70.6 million pounds from March 2023. Finished products include 190.5 million pounds used for whole milk, 291.1 million pounds of reduced fat and low fat milk, and 24.7 million pounds of fat free (skim) milk.

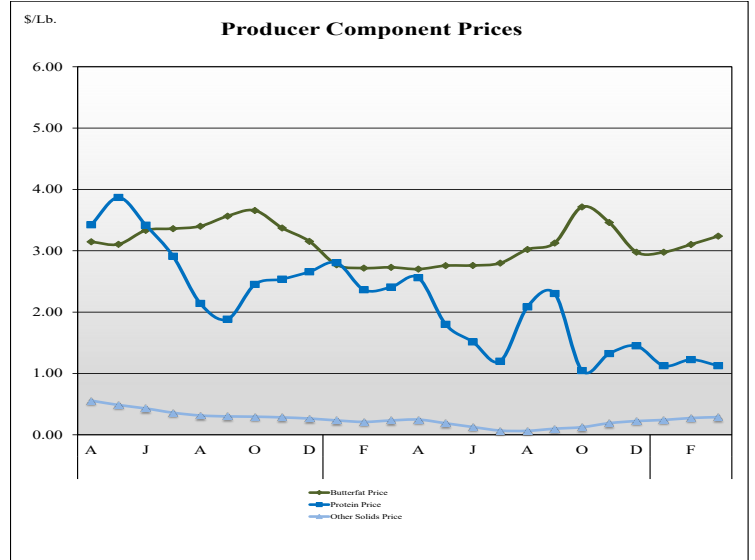
## STATISTICAL UNIFORM PRICE



**Statistical Uniform Price:** The Mideast Federal Order Statistical Uniform Price (SUP) at Cuyahoga County, OH was \$18.30 per cwt for March 2024. The March 2024 SUP was \$0.61 per cwt lower than the March 2023 SUP. The March 2024 SUP is \$0.68 per cwt higher than the February 2024 SUP.

**March 2024 Statistical Uniform Price:** Using the Class III Price formula at 3.5% BF, the component values for the March 2024 SUP are: \$3.37 per cwt for protein, \$11.33 per cwt for butterfat and \$1.64 per cwt for other solids. Also included in the SUP is the \$2.30 per cwt producer price differential. (May not add to total due to rounding.)

## CLASS AND COMPONENT PRICES



## WEIGHTED AVERAGE NATIONAL PRODUCT PRICES

