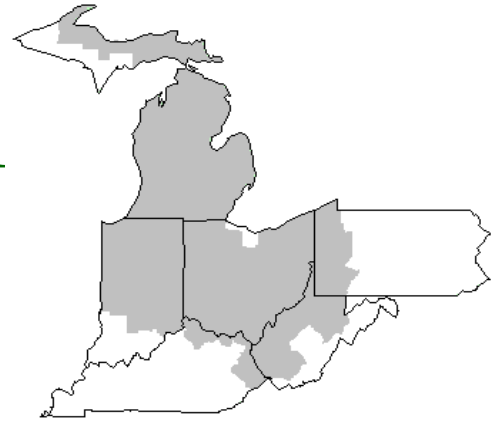


Mideast Market Administrator's Bulletin



Federal Order No. 33

Scott C. Jones, Market Administrator

Phone: (330) 225-4758 Toll Free: (888) 751-3220

Email: mideastorder@fmmaclev.com

WebPage: www.fmmaclev.com

OCTOBER 2024

USDA HPAI Information

Since the first detection of highly pathogenic avian influenza (HPAI) H5N1 in dairy cattle in March 2024, USDA has worked swiftly and diligently to assess the prevalence of the virus in the U.S. dairy herds and respond accordingly. USDA's Animal and Plant Health Inspection Service (APHIS), working closely with state officials and other federal partners, is leading efforts to prevent further spread, establish herd monitoring, and help producers enhance on-farm biosecurity measures. USDA also provides financial support to off-set costs related to production losses and enhanced biosecurity.

On April 24, USDA issued an *H5N1 Federal Order* mandating testing prior to the interstate movement of lactating dairy cattle and requires reporting of positive test results in livestock. Testing and reporting are crucial for understanding the extent of the virus and reducing further spread.

Enhanced biosecurity procedures are critical in keeping disease off farms and preventing further spread on affected farms. USDA continues to encourage biosecurity measures such as limiting visitors, cleaning and disinfecting milking equipment, avoiding the mixing of species, and monitoring and caring for sick animals.

USDA's voluntary H5N1 Dairy Herd Status Pilot Program enables producers to monitor their herds for HPAI via a weekly bulk milk sample. Once testing demonstrates a herd is free of the virus for three consecutive weeks, the program allows shipment of cows without having to test each one, as required under the *H5N1 Federal Order*.

With recognition of the challenges HPAI H5N1 causes for producers, USDA offers financial support to help dairy producers enhance biosecurity and offset costs associated with Influenza A testing, veterinary expenses, personal protective equipment purchases, milk disposal, and milk losses. Producers can contact their Area Veterinarians in Charge or State animal health official to enroll.

More details on the H5N1 Federal Order, Biosecurity, and participation in the Dairy Herd Status Program and USDA financial support programs are online at: [HPAI in Livestock|Animal and Plant Health Inspection Service \(usda.gov\)](https://www.usda.gov/animal-plant-health/animal-plant-health-inspection-service).

USDA Invests More than \$11 Million to Support Resiliency in U.S. Dairy Industry

The U.S. Department of Agriculture (USDA) announced \$11.04 million in funding to support dairy businesses and producers under the Dairy Business Innovation Initiatives (DBI) grant program. The initiatives support small and mid-sized dairy businesses in the development, production, marketing, and distribution of dairy products.

To date, the Initiatives have invested over \$64 million into more than 600 projects that are increasing dairy supply chain resiliency, creating new markets, and expanding economic growth in rural economies."

This year's funds are being awarded noncompetitively to the four current DBI Initiatives at California State University, Fresno, the University of Tennessee, Vermont Agency of Agriculture, Food & Markets, and the University of Wisconsin. The initiatives will use the funding to provide valuable technical assistance and subaward funds to dairy farmers and businesses across their regions, supporting them with business plan development, marketing, and branding, as well as increasing access to innovative production and processing techniques to support the development of value-added products.

September 2024 - Pool Summary

Classification of Producer Milk

	<i>Pounds</i>	<i>Percent</i>
Class I	568,151,223	35.3
Class II	374,762,451	23.3
Class III	485,963,939	30.2
Class IV	181,495,331	11.3
Total	1,610,372,944	100.0

Producer Prices

Producer Price Differential	\$ -0.62 / cwt
Butterfat Price	3.6114 / lb.
Protein Price	2.9249 / lb.
Other Solids Price	0.3430 / lb.
Somatic Cell Adjustment Rate	0.00114 / cwt
Statistical Uniform Price	22.72 / cwt

ANNOUNCEMENT OF PRODUCER PRICES

Federal Order No. 33

September 2024

COMPUTATION OF PRODUCER PRICE DIFFERENTIAL

	POUNDS	BUTTERFAT	SKIM / PROTEIN	NONFAT SOLIDS	OTHER SOLIDS	PRICE	VALUE
Class I Skim Value			555,390,139			\$11.49 / cwt	\$ 63,814,326.97
Class I Butterfat		12,761,084				3.5738 / lb.	45,605,562.00
Class I Location Differential	568,151,223						(368,220.91)
Class II SNF Value				32,896,844		1.1211 lb.	36,880,651.81
Class II Butterfat		24,573,761				3.6184/ lb.	88,917,696.80
Class III Protein Value			15,615,249			2.9249/ lb.	45,673,041.82
Class III Other Solids Value					28,020,347	0.3430/ lb.	9,610,979.03
Class III Butterfat		20,293,848				3.6114/ lb.	73,289,202.67
Class IV SNF Value				16,285,832		1.1109 lb.	18,091,930.76
Class IV Butterfat		8,174,160				3.6114/ lb.	29,520,161.41
Somatic Cell Value II / III / IV							<u>1,884,464.15</u>
TOTAL PRODUCER MILK VALUE	1,610,372,944	65,802,853	51,960,026		92,987,365		\$ 412,919,796.51
Overages						\$ 37,683.86	
Beginning Inventory & OS Charges						74,099.50	
TOTAL ADJUSTMENTS							\$ 111,783.36
TOTAL HANDLER OBLIGATIONS							\$ 413,031,579.87
Total Protein Value			51,960,026 lbs.	@	\$ 2.9249		\$((151,977,880.07)
Total Other Solids Value			92,987,365 lbs.	@	0.3430		(31,894,666.26)
Butterfat Value			65,802,853 lbs.	@	3.6114		(237,640,423.32)
Total Somatic Cell Values							<u>(2,832,219.23)</u>
TOTALS							-11,313,609.01
Net Producer Location Adjustments							\$ 1,522,354.67
1/2 Unobligated Balance Producer Settlement Fund							<u>565,000.00</u>
Total - Divided by Total Pounds			1,610,384,862 lbs.			-0.572922	\$ 9,226,254.34
Rate of Cash Reserve						<u>(0.04778)</u>	<u>(758,131.83)</u>
PRODUCER PRICE DIFFERENTIAL at Cuyahoga County, OH ¹			1,610,384,862			- \$0.62 / cwt	\$ 9,984,386.17

COMPONENT PRICES

September

COMPUTATION OF UNIFORM PRICE

September

	<u>2024</u>	<u>2023</u>		<u>2024</u>	<u>2023</u>
Butterfat Price	\$3.6114 / lb.	\$3.1264 / lb.	Class III Price - 3.5% BF	\$23.34	\$18.39
Protein Price	2.9249 / lb.	2.3027 / lb.	Producer Price Differential*	<u>-0.62</u>	<u>0.99</u>
Other Solids Price	0.3430 / lb.	0.0992 / lb.	Statistical Uniform Price	\$22.72	\$19.38
Somatic Cell Adjustment Rate	0.00114 / cwt	0.00097 /cwt			
Nonfat Solids Price ²	1.1109 / lb.	0.9382 / lb.			

CLASS PRICES

September

CLASSIFICATION OF PRODUCER MILK

September

	<u>2024</u>	<u>2023</u>		<u>2024</u>	<u>2023</u>
Class I*	\$23.60	\$20.90	Class I	Product lbs. 568,151,223	Product lbs. 549,450,037
Class II	22.40	19.98	Class II	374,762,451	170,709,259
Class III	23.34	18.39	Class III	485,963,939	700,383,761
Class IV	22.29	19.09	<u>Class IV</u>	<u>181,495,331</u>	<u>109,473,350</u>
			Total	1,610,372,944	1,530,016,407

¹ Subject to Location Adjustment.

² Producers are not paid on this component.

ORDER 33 MARKET SUMMARY

The Producer Price Differential for the Mideast Marketing Area for September 2024 was -\$0.62, and the Statistical Uniform Price was \$22.72 for the month. The Statistical Uniform Price is \$1.00 higher than last month and is \$3.34 higher than September 2023.

The Producer Butterfat Price of \$3.6114 per pound increased \$0.0482 from August and is up \$0.4850 from a year ago. The Protein Price of \$2.9249 is up \$0.7493 from last month and is up \$0.6222 from September 2023. The Other Solids Price in September was \$0.3430 per pound, an increase from last month's price of \$0.2959 and \$0.2438 higher than last September. The Somatic Cell Adjustment rate for

September was \$0.00114 per cwt. September producer receipts of 1.61 billion pounds were 0.9 percent higher than August and 5.3 percent higher than September 2023 production of 1.53 billion pounds. Producer milk allocated to Class I accounted for 35.3 percent of the total producer milk in September 2024, lower than 37.2 percent in August, and lower than 35.9 percent in September 2023. A total of 3,346 producers were pooled on the Mideast Order compared to 3,439 producers pooled in September 2023.

The market average content of producer milk was as follows: Butterfat 4.09%; Protein 3.23%; Other Solids 5.77% and Nonfat Solids 9.00%.

August Milk Production Up 0.1 Percent

Milk production in the 24 major States during August totaled 18.1 billion pounds, up 0.1 percent from August 2023. July revised production, at 18.2 billion pounds, was down 0.3 percent from July 2023. The July revision represented a decrease of 1 million pounds or less than 0.1 percent from last month's preliminary production estimate.

Production per cow in the United States averaged 2,036 pounds for August, 8 pounds above August 2023.

The number of milk cows on farms in the United States was 8.88 million head, 28,000 head less than August 2023, but unchanged more than July 2024.

The Mideast Marketing Area has four states represented in the 24 major states used above. They are Indiana, Michigan, Ohio, and Pennsylvania. Milk production in these Mideast states during August totaled 2.7 billion pounds, down 15 million pounds or 0.6 percent from August 2023.

Production per cow in the Mideast states averaged 1,991 pounds for August. This was an increase of 4 pounds from August 2023.

The number of milk cows was 1.34 million head, 6,000 head less than August 2023.

Released September 20, 2024, by the National Agricultural Statistics Service (NASS), Agricultural Statistics Board, United States Department of Agriculture (USDA).

August 2024 Highlights

Total cheese output (excluding cottage cheese) was 1.20 billion pounds, 1.7 percent above August 2023 and 0.5 percent above July 2024. Italian type cheese production totaled 499 million pounds, 3.1 percent above August 2023 and 0.6 percent above July 2024.

American type cheese production totaled 478 million pounds, 0.3 percent below August 2023 but 1.8 percent above July 2024.

Butter production was 159 million pounds, 14.5 percent above August 2023 but 3.0 percent below July 2024.

Dry milk products (comparisons in percentage with August 2023) Nonfat dry milk, human - 115 million pounds, up 2.2 percent. Skim milk powder - 50.3 million pounds, down 29.4 percent.

Whey products (comparisons in percentage with August 2023) Dry whey total - 65.5 million pounds, down 21.6 percent. Lactose, human, and animal - 95.6 million pounds, up 3.5 percent. Whey protein concentrate, total - 41.5 million pounds, up 1.7 percent.

Frozen products (comparisons in percentage with August 2023) Ice cream, regular (hard) - 69.3 million gallons, up 5.9 percent. Ice cream, low-fat (total) - 38.7 million gallons, down 8.8 percent. Sherbet (hard) - 2.15 million gallons, up 4.0 percent. Frozen yogurt (total) - 4.39 million gallons, up 1.2 percent.

Released October 4, 2024, by the National Agricultural Statistics Service (NASS), Agricultural Statistics Board, United States Department of Agriculture (USDA).

Bulletin WebPage Edition
www.fmmacleev.com
Featured this month are:

- Producer Milk Classification
- Statistical Uniform Price
- Class and Component Prices
- National Product Prices

Weighted Averages - Butterfat, Protein, Other Solids, Somatic Cell Count by State Federal Order No. 33

State	August 2024						August 2023					
	Number of Producers	Pounds of Milk (000)	-----Weighted Averages -----				Pounds of Milk (000)	-----Weighted Averages -----				
			Butterfat	Protein	Other Solids	SCC (000)		Butterfat	Protein	Other Solids	SCC (000)	
Michigan	721	790,795	4.06	3.17	5.79	181	667,461	3.95	3.13	5.80	177	
Ohio	1,153	378,592	3.99	3.13	5.68	218	370,698	3.93	3.13	5.76	212	
Indiana	587	239,806	4.06	3.19	5.82	223	187,333	3.90	3.10	5.79	222	
Pennsylvania	622	77,531	3.95	3.08	5.65	263	80,950	3.88	3.05	5.66	247	
New York	117	46,535	4.28	3.23	5.89	212	41,723	4.11	3.23	5.92	213	
Other	146	62,620	4.21	3.20	5.75	189	46,333	4.02	3.14	5.77	202	
Total/Average *	3,346	1,595,880	4.05	3.16	5.76	201	1,394,497	3.94	3.13	5.78	198	

* Totals may not add due to rounding. Data provided on a one-month delay basis and includes only milk from these states *pooled* on the Mideast order.



**United States
Department of
Agriculture**

PRSR STD
U.S. POSTAGE
PAID
Cleveland, Ohio
Permit No. 2511

Mideast Market Administrator Bulletin
1325 Industrial Parkway North
P.O. Box 5102
Brunswick, Ohio 44212

POSTMASTER: Time Sensitive Material - Deliver Promptly

The U.S. Department of Agriculture (USDA) prohibits discrimination in all its programs and activities on the basis of race, color, national origin, age, disability, and where applicable, sex (including gender identity and expression), marital status, familial status, parental status, religion, sexual orientation, political beliefs, genetic information, reprisal, or because all or part of an individual's income is derived from any public assistance program. (Not all prohibited bases apply to all programs.) Persons with disabilities who require alternative means for communication of program information (Braille, large print, audiotape, etc.) should contact USDA's TARGET Center at (202) 720-2600 (voice and TDD).

To file a complaint of discrimination, write USDA, Assistant Secretary for Civil Rights, Office of the Assistant Secretary for Civil Rights, 1400 Independence Avenue, S.W., Stop 9410, Washington, D.C. 20250-9410, or call (866) 632-9992 (English) or (800) 877-8339 (TDD) or (866) 377-8642 (English Federal-relay) or (800) 845-6136 (Spanish Federal-relay). USDA is an equal opportunity provider and employer.

**FEDERAL ORDER DATA
September 2024**

<u>Marketing Area</u> ^{1/}		<u>Producer Milk</u>		<u>Class I</u>	<u>Producer</u>	<u>Statistical</u>
		<u>Total</u>	<u>Class I</u>	<u>Percent</u>	<u>Price Differential</u>	<u>Uniform Price</u>
		<i>(000)</i>	<i>(000)</i>	<i>%</i>	<i>(per cwt.)</i>	<i>(per cwt.)</i>
FO 1	Northeast - (<i>Boston</i>)	2,174,899	638,496	29.4	\$0.23	\$23.57
FO 5	Appalachian - (<i>Charlotte</i>)	418,965	299,106	71.4	^{2/}	24.48
FO 6	Florida - (<i>Tampa</i>)	203,325	164,708	81.0	^{2/}	26.19
FO 7	Southeast - (<i>Atlanta</i>)	267,734	212,085	79.2	^{2/}	25.01
FO 30	Upper Midwest - (<i>Chicago</i>)	1,627,973	157,053	9.6	-0.24	23.10
FO 32	Central - (<i>Kansas City</i>)	1,052,106	340,870	32.4	-0.93	22.41
FO 33	Mideast - (<i>Cleveland</i>)	1,610,373	568,151	35.3	-0.62	22.72
FO 51	California (<i>Los Angeles</i>)	1,620,198	389,752	24.1	-0.89	22.45
FO 124	Pacific Northwest - (<i>Seattle</i>)	587,954	129,106	22.0	-0.75	22.59
FO 126	Southwest - (<i>Dallas</i>)	810,977	322,525	39.8	-0.45	22.89
FO 131	Arizona - (<i>Phoenix</i>)	306,882	100,492	32.8	^{2/}	22.94

^{1/} Names in parentheses are principal points of markets.

^{2/} Producers in these markets are paid on the basis of a uniform skim and butterfat price.

MINIMUM PARTIAL PAYMENT PRICE FOR OCTOBER 2024\$22.29 /cwt.

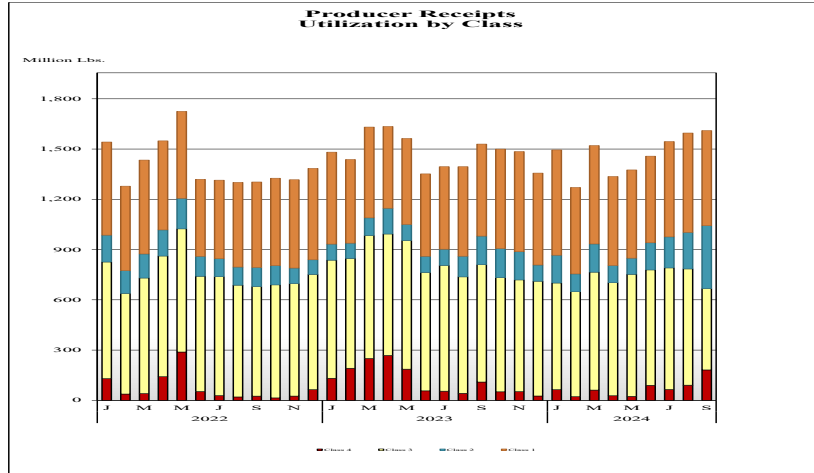


Mideast Market Administrator's Bulletin

Federal Order No. 33

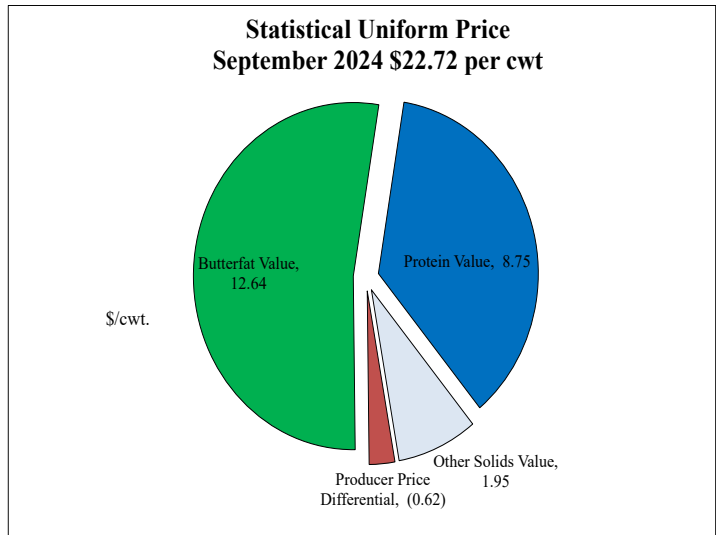
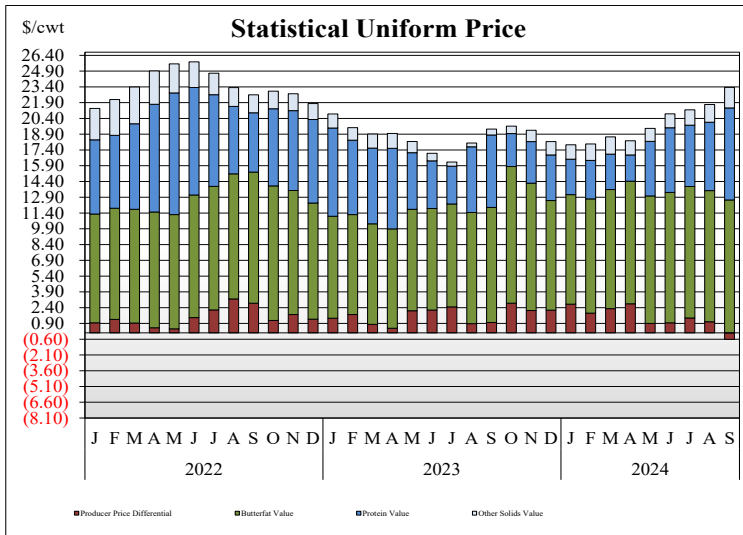
Supplement
October 2024

PRODUCER MILK CLASSIFICATION



Producer Receipts: Producer receipts for the Mideast Order totaled 1.61 billion pounds in September 2024. The pounds allocated to Class I represented 35.3 percent of the total pounds. Producer receipts increased 14.4 million pounds compared to August 2024, and were up 80.4 million pounds from the prior year.

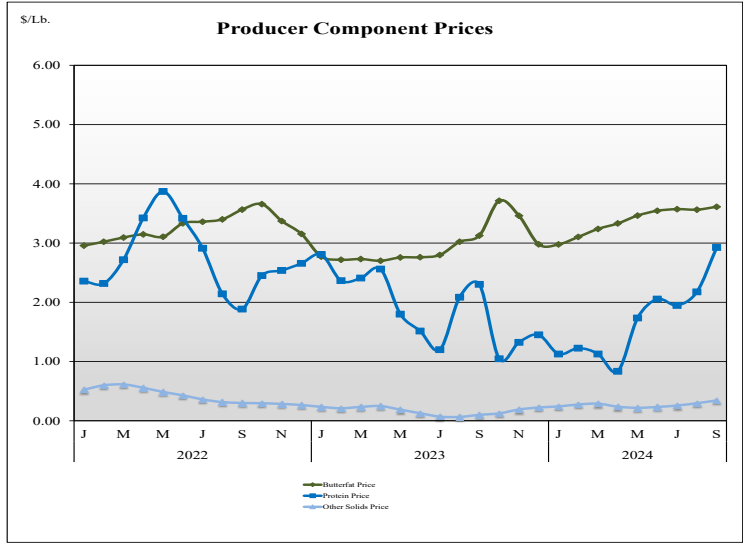
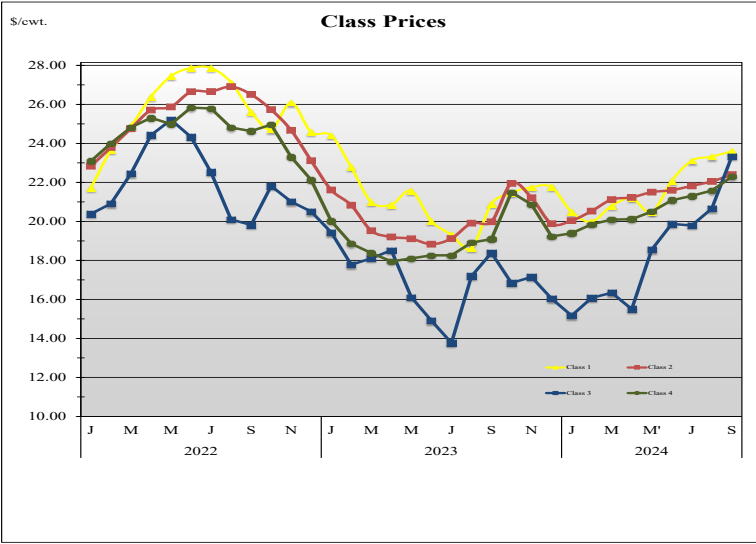
STATISTICAL UNIFORM PRICE



Statistical Uniform Price: The Mideast Federal Order Statistical Uniform Price (SUP) at Cuyahoga County, OH was \$22.72 per cwt for September 2024. The September 2024 SUP was \$3.34 per cwt higher than the September 2023 SUP. The September 2024 SUP is \$1.00 per cwt higher than the August 2024 SUP.

September 2024 Statistical Uniform Price: Using the Class III Price formula at 3.5% BF, the component values for the September 2024 SUP are: \$8.75 per cwt for protein, \$12.64 per cwt for butterfat and \$1.95 per cwt for other solids. Also included in the SUP is the -\$0.62 per cwt producer price differential. (May not add to total due to rounding.)

CLASS AND COMPONENT PRICES



WEIGHTED AVERAGE NATIONAL PRODUCT PRICES

